

CERAMIC STUDY GROUP Inc.

Margaret Hall – Kurinuki Pottery

Kurinuki translates in Japanese to, 'to hollow', and is a traditional technique of make pottery by carving away from a single block of clay. Hollowing out clay in this way is a slow and meditative process that produces truly unique one-of-a-kind ceramics that can never be repeated. Margaret Hall is a member of our CSG committee, and she has been a ceramic potter for many years. She is well known for her Sogetsu Ikebana containers.

CSG May 17th 2023 Presentation

Come and join us at 16a Balcombe Heights Estate, starting at 7.45pm.

Margaret's presentation will demonstrate the making of pottery using the Kurinuki technique and she will bring along some of her Kurinuki pots. After her demonstration we will have some clay out for members if they want to try the technique themselves.



Where: Building 16A, Balcombe Heights Estate, 92 Seven Hills Road,
Baulkham Hills (see Map below for directions on how to get there)

When: Wednesday 17th May 2023

Time: 7.45pm - 10pm

Cost: \$10 members / \$12 non-members

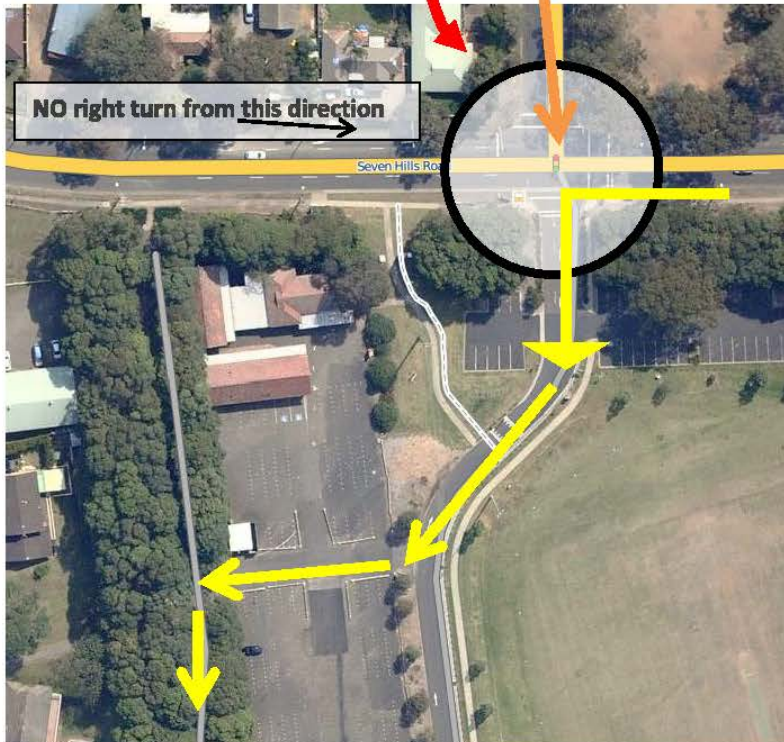
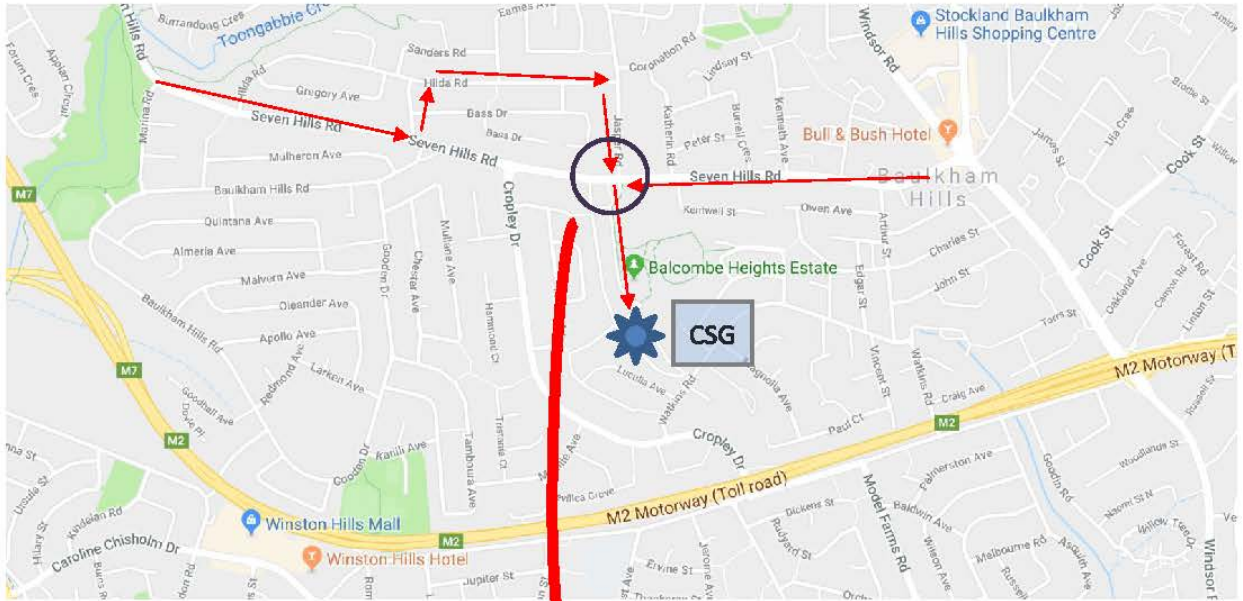
Plenty of free parking.

Enquiries: clayalliband@hotmail.com

Phone Kay: 0404 832 391

Directions to CERAMIC STUDIES GROUP - Building 16a

(If using GPS: use address 92 Seven Hills Rd Baulkham Hills)





Follow the avenue of trees.



CSG Entrance

Building 16a

Parking

Parking