



CERAMIC STUDY GROUP Inc.

Guo Jun Yu (Charlie)

Charlie is a very accomplished Blue and White Porcelain painter. He studied under the Master Yunpeng Huang the Director of the Royal Porcelain Factory in Jingdezhen.

Blue and white porcelain uses cobalt oxide, to create designs on clean, white porcelain clay that is then covered in a layer of transparent glaze and fired in a kiln to 1300°C. Blue and white wares are found in the Tang dynasty (618-907) but it was not until the Yuan dynasty (1271-1368) that the art reached perfection. In the early 14th century, mass-production of fine, transparent, blue and white porcelain started at Jingdezhen.

During the Ming (1368-1644) and Qing (1644-1911) dynasties, the blue and white ware industry became increasingly valued by European aristocracy and an important trade in blue and white decorated porcelain developed.

CSG Wednesday April 17th 2019

Come and join us at 16a Balcombe Heights Estate where Charlie will demonstrate his painting technique on porcelain, show the materials he uses for the painting, and give a presentation on his work.



Where: Building 16A, Balcombe Heights Estate, 92 Seven Hills Road,
Baulkham Hills (see Map below for directions on how to get there)

When: Wednesday 17th April 2019

Time: 7:45-10pm

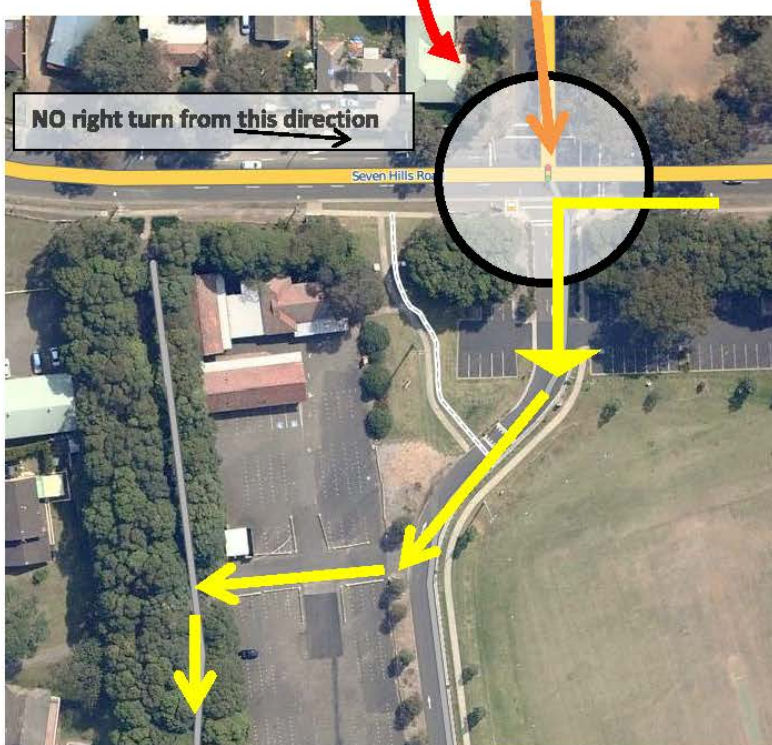
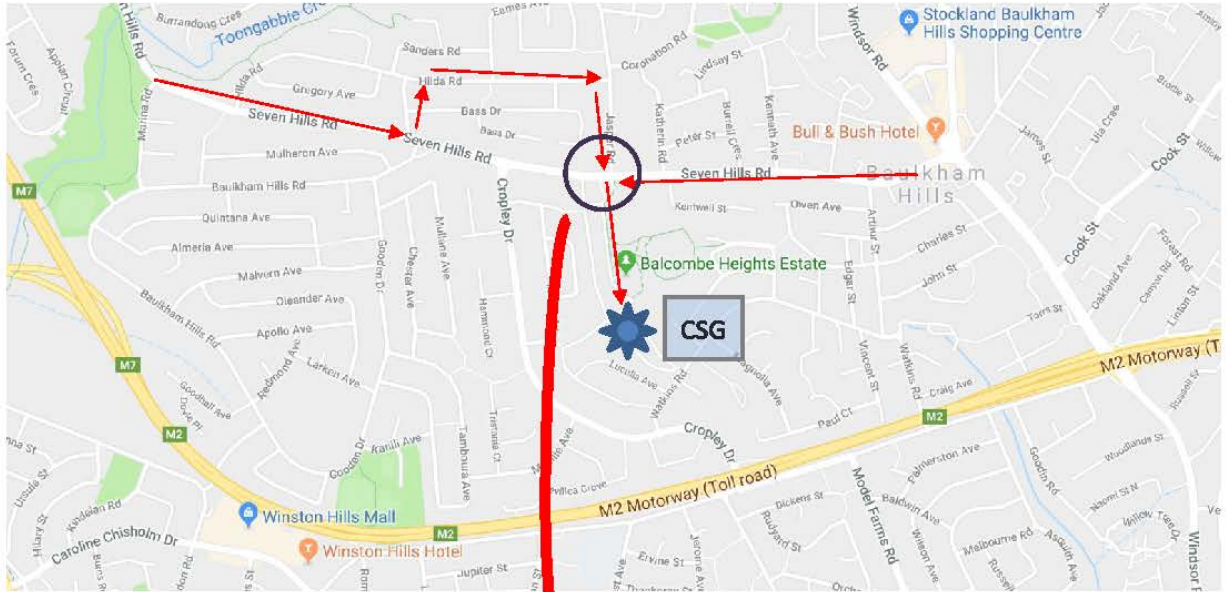
Cost: \$8 members / \$10 non-members

Enquiries: clayalliband@hotmail.com

Phone: Kay - 9871 3145

Directions to CERAMIC STUDIES GROUP - Building 16a

(If using GPS: use address 92 Seven Hills Rd Baukham Hills)





Follow the avenue of trees.



CSG Entrance

Building 16a

Parking

Parking