



# CERAMIC STUDY GROUP Inc.

## Graham Hay - Paper Clay

Graham Hay is an international artist based in Western Australia. His art practice is informed by over two decades of critical ethnography research, focussing on collective and individual artistic expression.

While he works across different mediums, he is internationally recognised as a pioneer in the paper clay sculpture movement. Paper clay is now a third of all clay used in pottery and sculpture studios and classrooms in Western Australia, offering both an easier entry pathway for clay beginners, and increased creativity potential for experienced potters and sculptors.

*"I have been a 'clay-holic' since childhood, transferring my enthusiasm to the new material paper clay in 1992. This was after being introduced to it as a way to make tiles that don't warp, by Ceramic Chemist Mike Kusnik. I immensely enjoy sharing my studio discoveries and unique techniques with others, particularly when I see their eye light up, when they realise the creative potential the new material offers them in their own work."*

## CSG Wednesday October 17<sup>th</sup> 2018

Come and join us at 16a Balcombe Heights Estate where Graham will show his sculpturing techniques with paper clay.



**Where:** Building 16A, Balcombe Heights Estate, 92 Seven Hills Road,  
Baulkham Hills

(see Map below for directions on how to get there)

**When:** Wednesday 17<sup>th</sup> October 2018

**Time:** 7.45 - 10pm

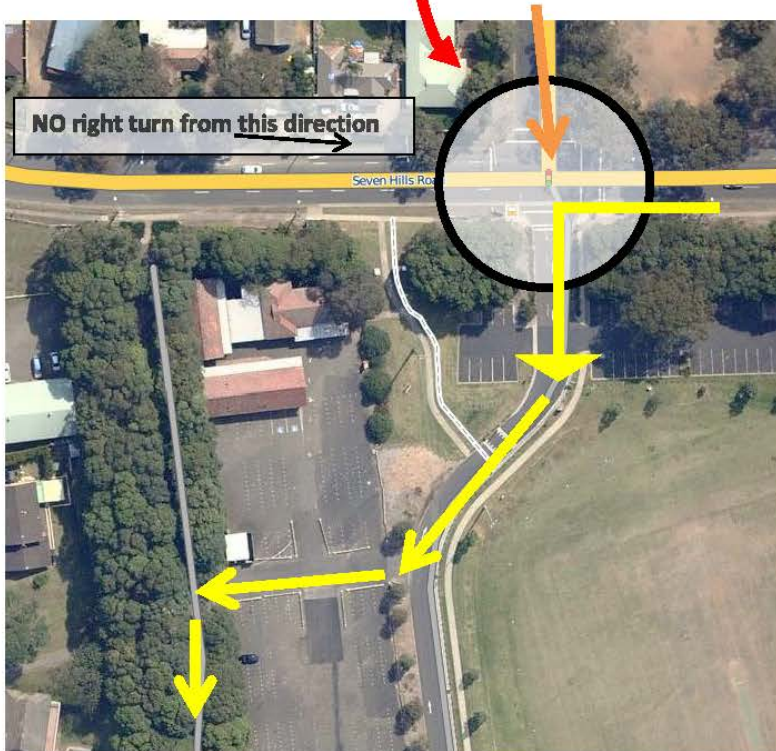
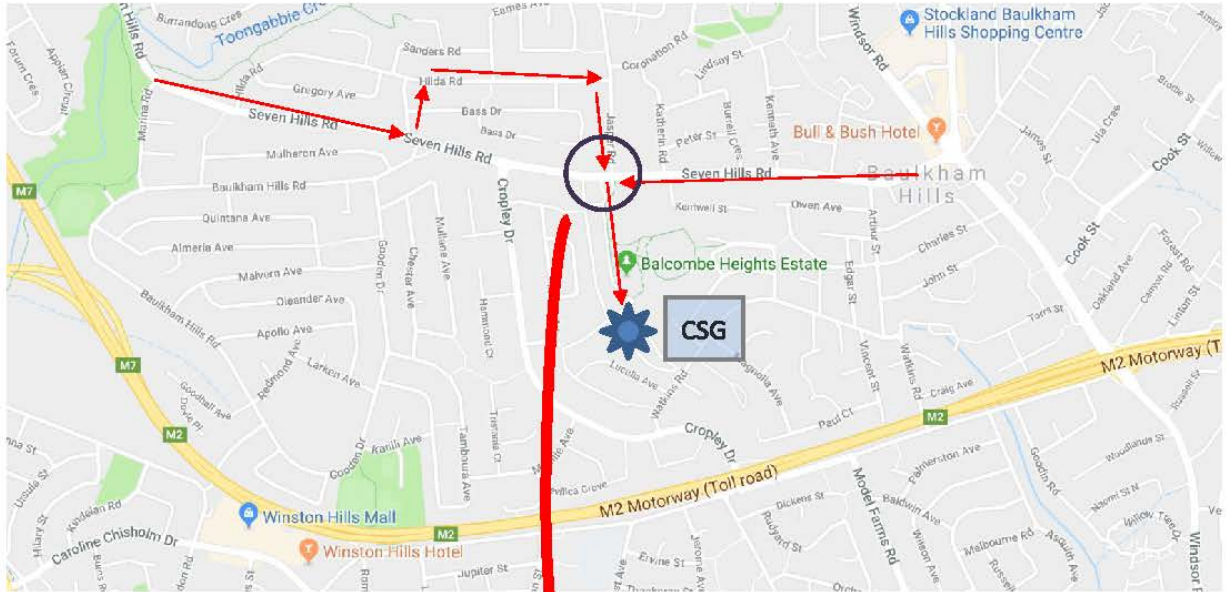
**Cost:** \$5 members / \$8 non-members

**Enquiries:** [clayalliband@hotmail.com](mailto:clayalliband@hotmail.com)

**Phone:** Kay - 9871 3145

**Directions to CERAMIC STUDIES GROUP - Building 16a**

**(If using GPS: use address 92 Seven Hills Rd Baulkham Hills)**





Follow the avenue of trees.

